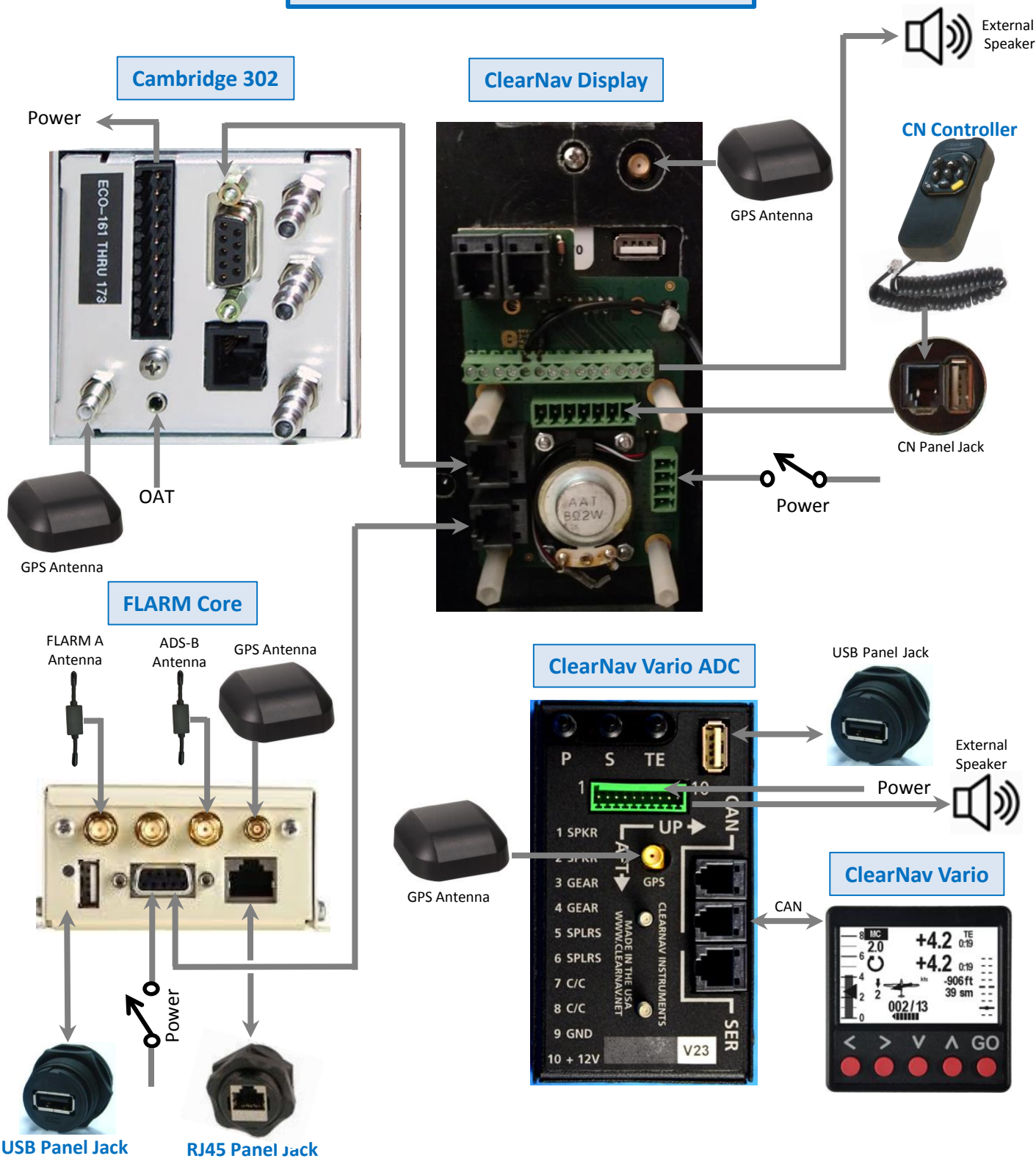


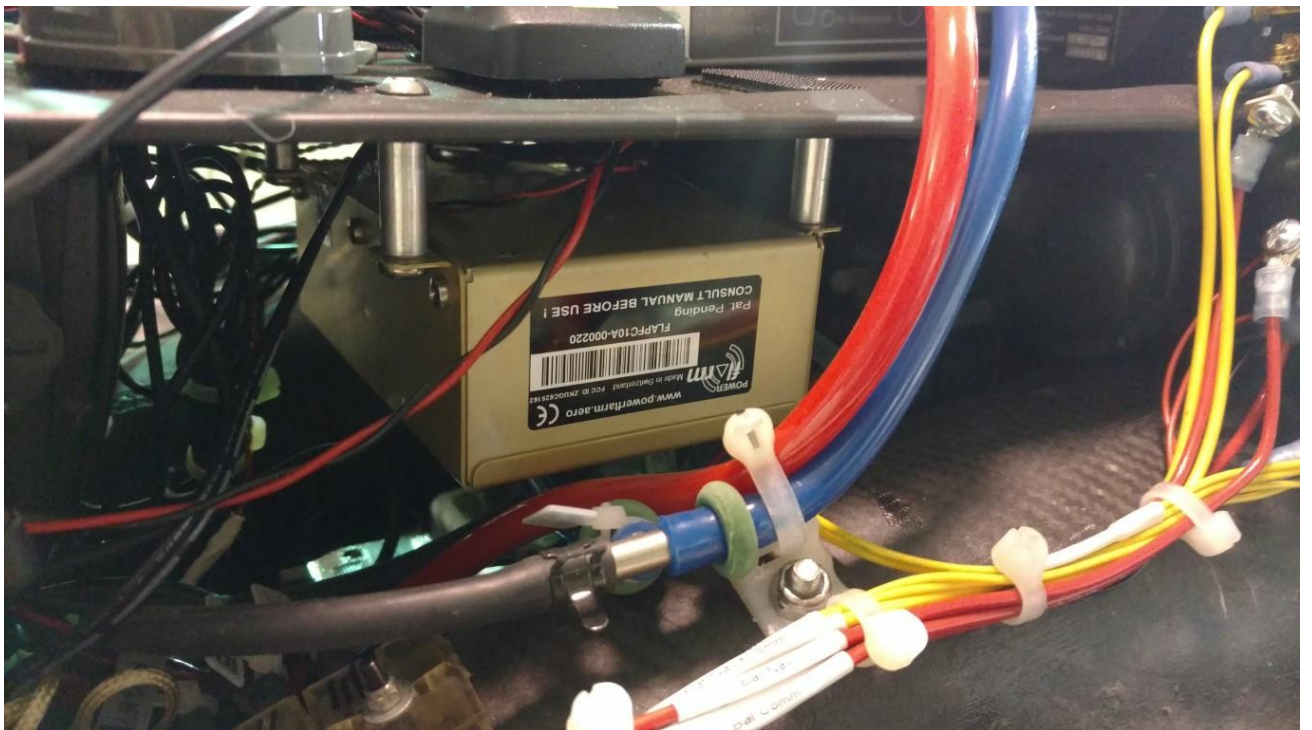
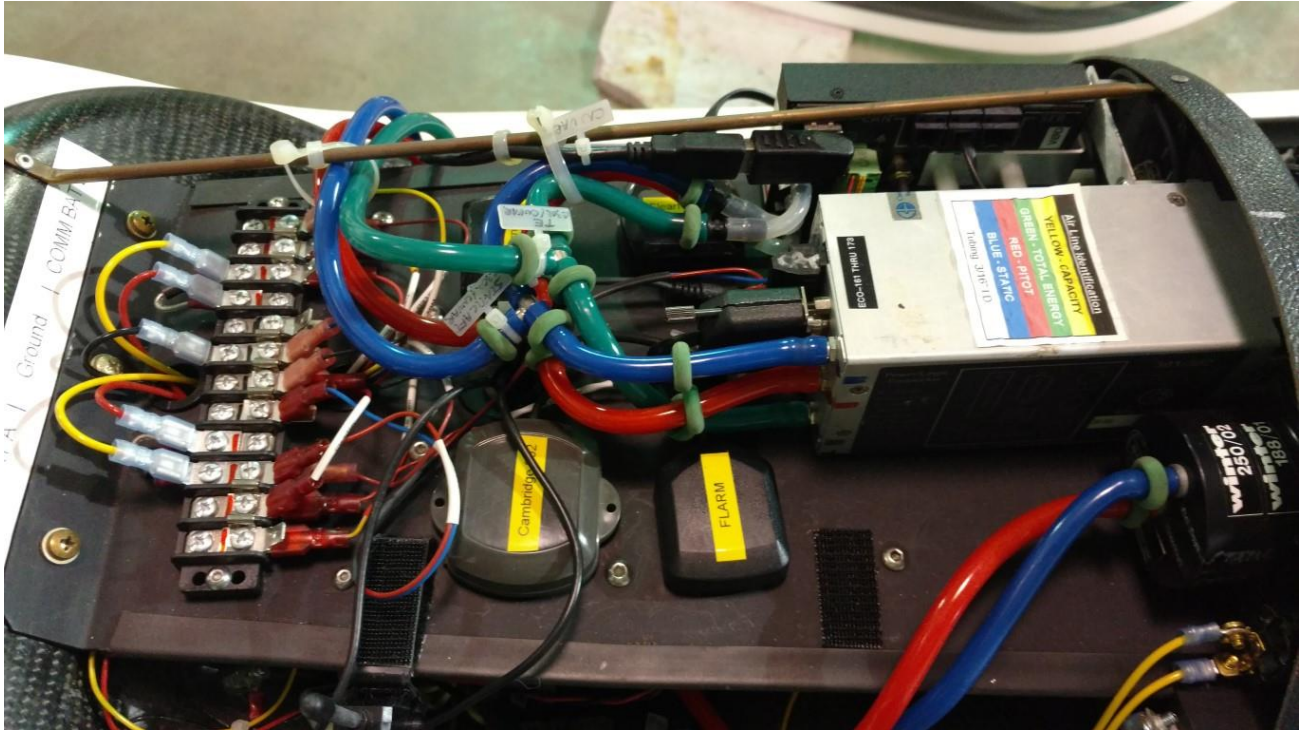
ASW-27 N227BB

Avionics Functional Block Diagram



ASW-27 N227BB

Avionics Shelf



ASW-27 N227BB

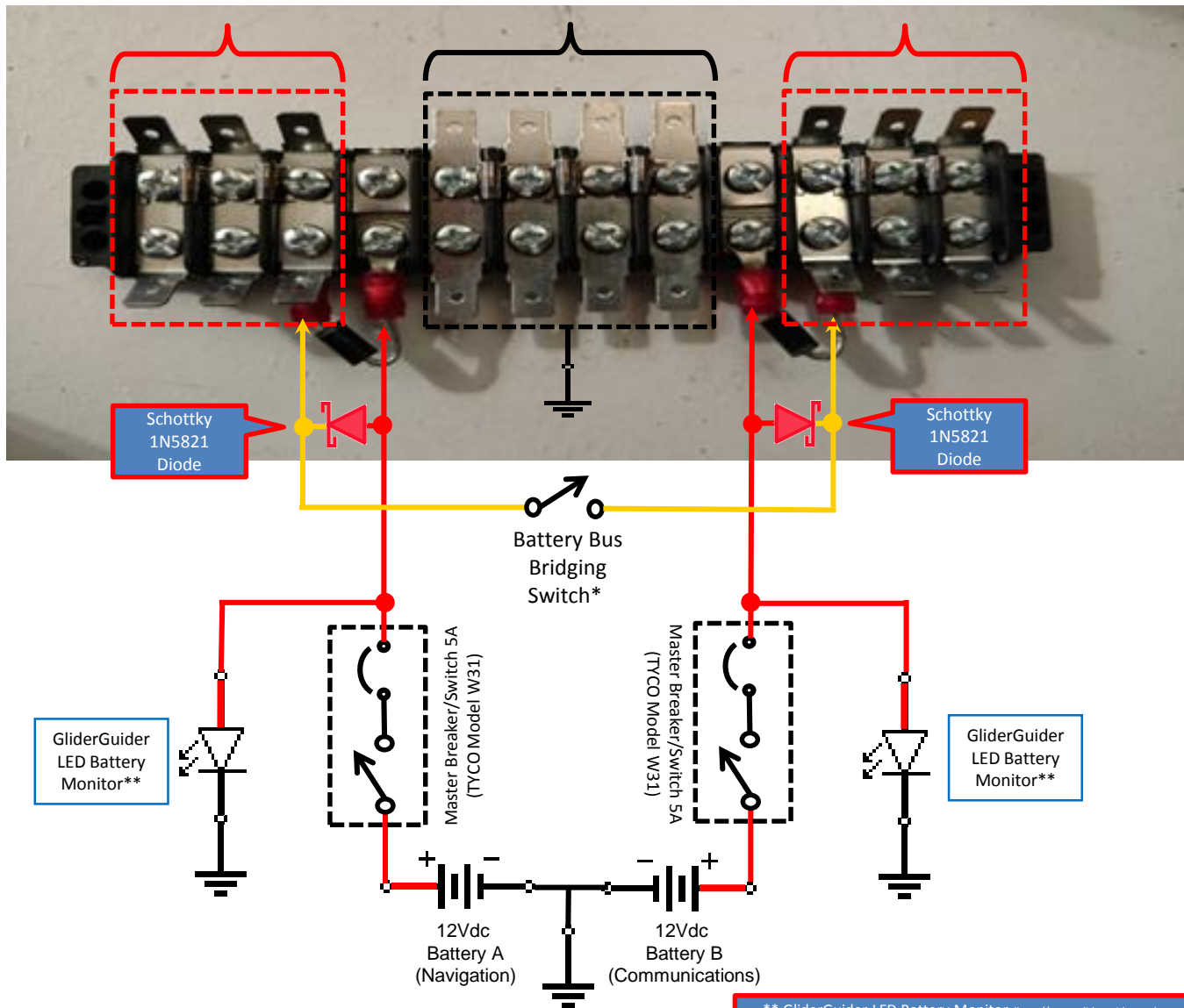
Avionics Power Distribution

To Avionics

Battery A Bus
(Navigation)

Battery Ground
Bus

Battery B Bus
(Communications)



** GliderGuider LED Battery Monitor (<http://www.gliderguider.net>)

	Good	Battery voltage more than 12.1V
	Intermediate	Battery voltage between 11.75V and 12.1V
	Low	Battery voltage less than 11.75V

* The Battery Bus Bridging Switch is to tie the two power buses together and, by using the two diodes, not allowing cross charging of the batteries

